



# Offering spiritual care in later life

## **Practical and Pastoral Responses to Dementia**

Julia Burton-Jones – Bible Reading Fellowship,  
and Rochester and Canterbury Dioceses



*Enabling all ages to grow in faith*

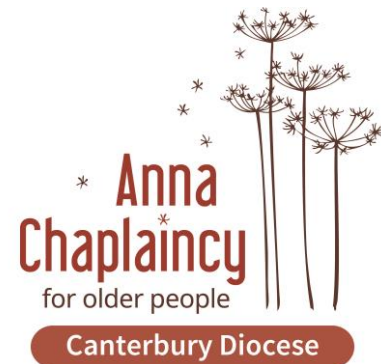
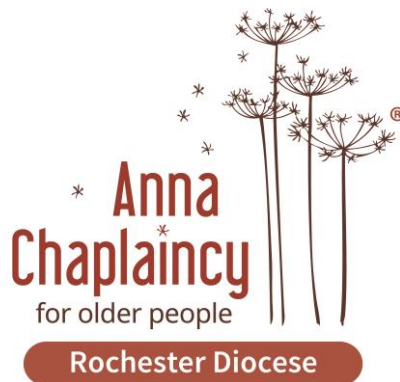
**Anna Chaplaincy is part of The Bible Reading Fellowship.  
Other BRF programmes/ministries include:**

**Living Faith**  
**Messy Church**  
**Parenting for Faith**



# Dual Role

1. From 2015 Anna Chaplaincy Lead (formerly dementia specialist) for Dioceses of Rochester and Canterbury, funded initially through Henry Smith
2. From 2020 National Church Lead for BRF Anna Chaplaincy



# What is Anna Chaplaincy?

Anna Chaplains offer non-judgemental, person-centred spiritual care for older people of strong, little or no faith. They are community-based and are authorised and sent out by their local church or group of Churches Together.



# Why Anna?



Named after Anna, widow and faithful older person who with Simeon recognised the baby Jesus as Messiah and fulfilment of God's promises

Recognises older people have prophetic voices and wisdom to share

*(Icon painted at Malling Abbey)*

# ‘Dementia Friendly Church’

- 2014 project in Rochester Diocese to explore what Dementia Friendly Church might look like
- Dementia Friends sessions across the Diocese
- Consultation on how churches can contribute to dementia friendly communities, under the Prime Minister’s Challenge on Dementia

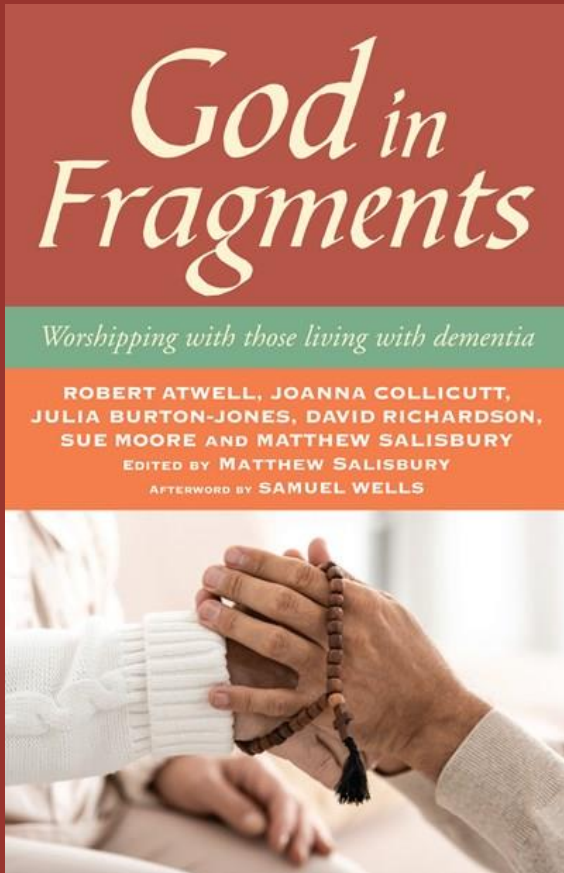


Empowering people with dementia to have high aspirations, confidence and know they can contribute





# Initiatives in the Church of England



National networking events  
at Church House

Liturgical Commission event  
on dementia

Lichfield Diocese project on  
dementia inclusion

Churches Together in  
Cumbria Dementia Enablers

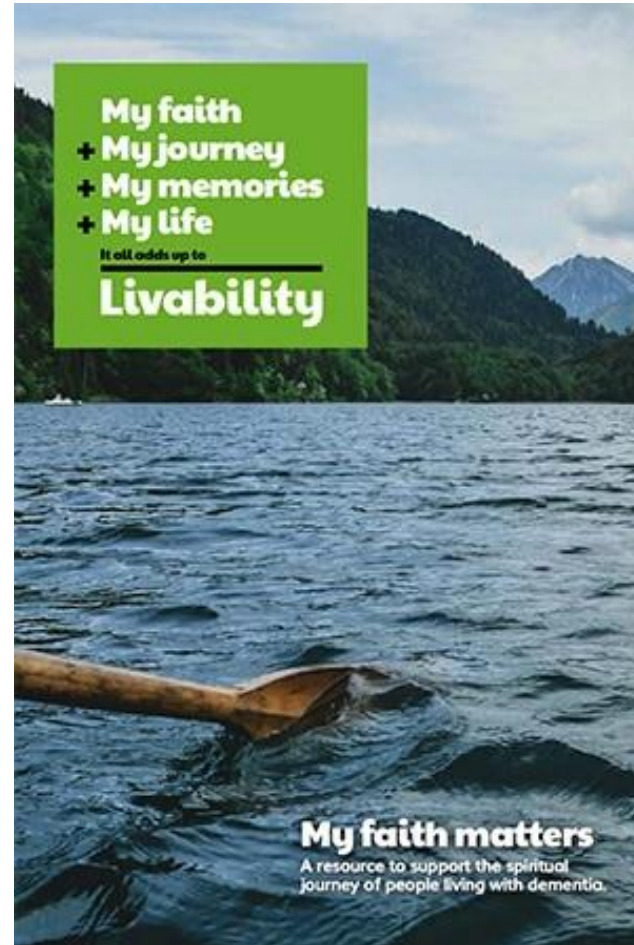
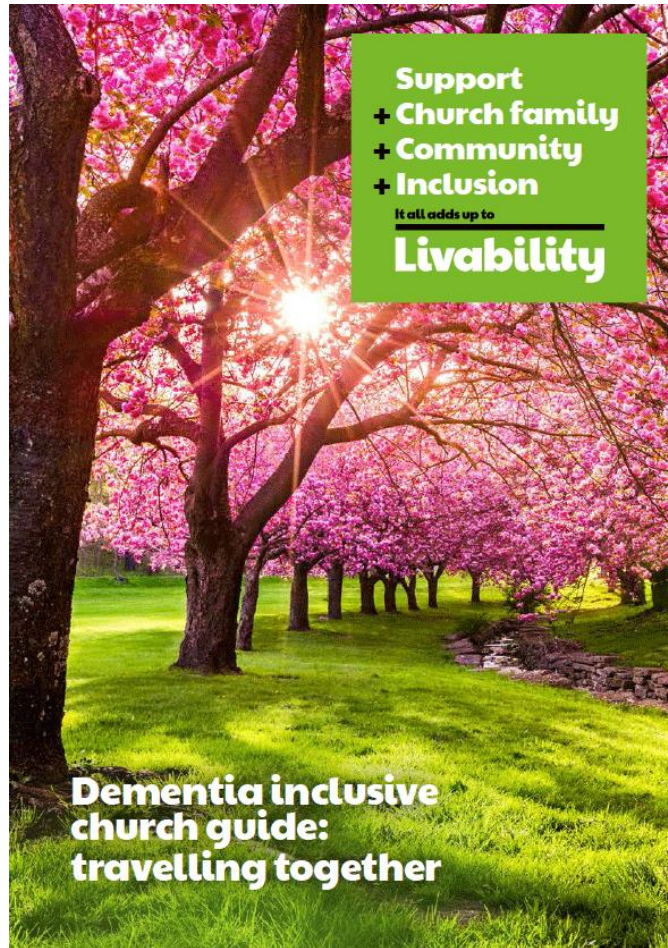


# Staffordshire University Films

Dr Peter Kevern commissioned a series of films on dementia friendly church released 2020 and available to view on the websites of the organisations and Staffordshire university

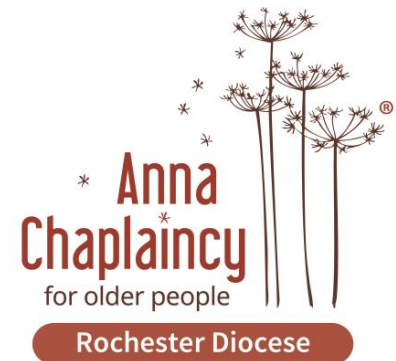


# Livability Resources



# Anna Chaplaincy in Kent

- First Anna Chaplains and Anna Friends in Rochester Diocese commissioned April 2017 under Head Licence Agreement (HLA) with BRF
- First Anna Chaplains in Canterbury Diocese 2019
- North Kent Methodists appoint first chaplain 2021
- Discernment and training pathways created
- Local hub for learning and support
- Team of 70 now across Kent
- Lay and ordained, paid and volunteer



# History of Anna Chaplaincy

- Established in Alton by Debbie Thrower in 2010
- Part of The Bible Reading Fellowship since 2014
- Wide ecumenical spread: Anglicans, Catholics, Methodists, Baptists, Free Evangelicals....
- National network now of over 160 Anna Chaplains or those in equivalent roles across the UK and hundreds of Anna Friends.
- Pushing up standards of spiritual care for older people through sharing experience and best practice

# Anna Chaplaincy and Dementia Inclusion

Spiritual care for care home residents

Offering regular inclusive services at church

Setting up groups/activities, e.g. dementia cafes

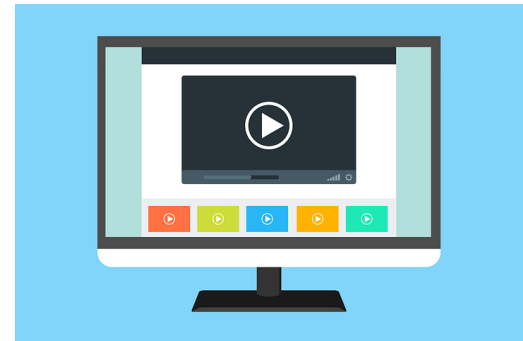
Supporting family carers, e.g. retreat, groups

Running singing groups



# Adapting to the Pandemic

- Switching one to one chaplaincy to telephone, cards and doorstep visits
- Services offered to care homes live via Skype, Zoom, telephone and recorded via DVD







**A Carer's Guide**

How to help someone spiritually  
towards the end of life

DEBBIE THROWER



**A Carer's Guide**

How to worship with  
a group of residents



**A Carer's Guide**

How to worship with individuals  
in your care



**A Carer's Guide**

How to take care of yourself  
in stressful times

SALLY REES



**A Carer's Guide**

How to have a memorial service  
at home when you are unable  
to attend the funeral

SALLY REES

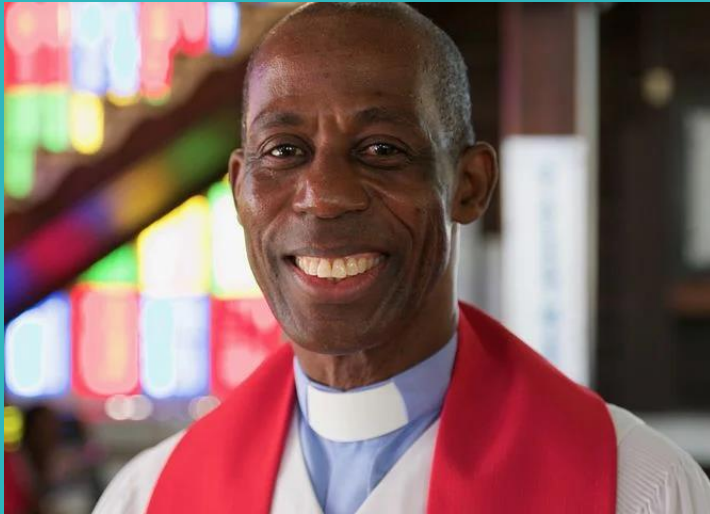


# Carer's Guides pack



# Emerging Areas for Support

**Supporting Clergy  
Affected by Dementia**



**Supporting BAME elders  
living with dementia**





Contact: [annachaplaincy@brf.org.uk](mailto:annachaplaincy@brf.org.uk)

[annachaplaincy.org.uk](http://annachaplaincy.org.uk)