



Parish Profile for the  
Post of Vicar  
in The Theydon Parishes:  
St Mary the Virgin  
Theydon Bois,  
All Saints  
Theydon Garnon,



and the Parish of  
St Michael's  
Theydon Mount  
with St Mary's  
Stapleford Tawney



The Church of England  
in Essex and East London  
Diocese of Chelmsford



## THE DIOCESE: A MESSAGE FROM BISHOP GULI



Covering Essex and East London, Chelmsford is one of the largest, most diverse and exciting dioceses in the Church of England. We are home to more than 3 million people representing many socio-economic, ethnic and faith groups and a fantastic variety of cultures and traditions.

We have enormous opportunities for mission and service and considerable challenges to face and resolve as we continue to deal with the long-term implications of the COVID-19 pandemic and global challenges that have a direct impact on our parish churches and the communities we serve.

My sense is that the whole Church of God is in a liminal season when we cannot clearly see the future and so don't quite know what it will look like. But we know that the Church has faced profound challenges in the past and as we look to the future we do so with faith that when we open ourselves up to being changed and transformed, we are best placed to serve God and God's people.

It is within this context and following a period of listening and discernment that started when I became Bishop of Chelmsford in 2021, that we have begun to articulate our future direction of travel as a Diocese with a focus on [travelling well together](#):

- Our purpose is to love God and to love our neighbour; to worship faithfully and empowered by the Holy Spirit, witness to the love of God revealed in Jesus Christ as we serve the extraordinarily diverse array of local communities in Essex and East London.
- Our approach is to enable and empower parishes and worshipping communities to discern how they are to be God's people in their own very different local contexts and as part of one diocesan family.
- Underpinning our approach is an invitation to a way of being articulated by shared diocesan values which might shape how we travel together, support each other and provide mutual accountability.

Since I became Bishop of Chelmsford, I have witnessed people's great warmth and I have seen first hand, the wonderful things going on in our parishes. Any new priest joining us in the Diocese of Chelmsford does so at a time of challenge, a time of change and most significantly a time of hope for our Church in this most diverse and exciting of dioceses.

**+Guli**

**Bishop of Chelmsford**

**Find out more about our Diocesan Direction of Travel and Values:**



[www.chelmsford.anglican.org/travelling-well-together](http://www.chelmsford.anglican.org/travelling-well-together)

# Overview of Parishes and Clergy Profile

## Introduction

Our new incumbent will be taking responsibility for the Joint Benefice of St Mary the Virgin Theydon Bois and All Saints Theydon Garnon, and the parish of St Michael's Theydon Mount and St Mary the Virgin Stapleford Tawney. In short:

- one Benefice,
  - three Parishes,
  - three congregations,
  - four worship centres,
- with variety in abundance.

The three Parishes are situated to the north east of London in the western part of the county of Essex. They cover a mixture of rural Essex and suburbia. Theydon Bois is a large village and St Mary's has a substantial



thriving congregation. The other three churches are in more rural locations but All Saints parish includes part of the neighbouring town of Epping. Their congregations are smaller, but they are loyal and committed, and are predominately from outside their parishes.

We are three active parishes that provide the opportunity to deliver a range of styles of worship from the Book of Common Prayer to All Age Worship. Our congregations are committed to developing their churches and reaching out to their communities in mission and ministry. We are excited by what lies ahead and hope to build on the good work already being undertaken in support of our mission statements. We face different challenges in our quest to serve God in each community, whilst promoting the Christian faith.

## Overall Aims

The overall future aims across our Benefice can be summarised as follows:

- Taking forward the goals of *Travelling Well Together*, the Diocesan vision.

- Developing our depth of Christian commitment, as well as the numerical growth of our parishes.
- Facilitating spiritual growth within the church family and surrounding communities.
- Exploring ways of bringing our parishes and congregations together to work harmoniously.
- Developing pastoral care support to provide comfort to those in need.
- Facilitating the search to fill the Associate Priest vacancy for the Benefice and to mentor and develop the candidate once in post.

## Characteristics Required

There will be slightly different demands made on the incumbent by the different worshipping patterns of each church, but we are praying for a candidate who will display the following characteristics:

- An inspirational community-spirited leader who, while upholding church traditions, is dynamic and forward thinking, able to maintain what is good but able to think strategically and manage change.
- To be able to lead imaginatively and with a common purpose and vision, also with an inclusive and welcoming mindset to encourage people of all ages to join the congregations.
- To provide leadership to the four churches with their individual worshipping patterns, which will require patience, flexibility and stamina.
- To embrace the development and use of new technological tools to support worship.
- Administratively competent, with the ability to use computers for word-processing, email and internet access, while also being comfortable using the support offered by a Benefice Administrator.

Our new incumbent could be an experienced member of the clergy or a curate moving to their first incumbency where a supportive and capable lay leadership will enable growth and development.

## Support

In return, the new incumbent can expect strong support from across all age groups of the congregations in terms of:

- Enthusiasm - the three congregations are brimming with a variety of skills that can be shared across the group of churches.
- Dedication - the respective congregations are committed members of the church family and can be relied upon for a long-term commitment.
- Lay Ministry - there is a committed and experienced team of two Licensed Lay Ministers and three Authorised Local Preachers already in place, in addition to Junior Church leaders, who ensure that a full range of worship and instruction is provided to the congregations across the four churches.
- Teamwork - the existing churchwarden team representing the four churches are experienced and work cohesively together across the Benefice, complemented by three fully functioning Parochial Church Councils covering the four churches.

## Key Tasks

Key tasks for the new incumbent will include:

- Developing and nurturing the faith of our congregations.
- Attracting and welcoming new members into our congregations.
- Developing ministry with young adults, teens and younger children, including strengthening the links with the local scouting and guiding organisations.
- Leading innovation and creativity in worship and to look at new ways of reaching out to our congregations.
- Supporting and enhancing the ministry of others, including leading the team of lay leaders in worship.
- Developing pastoral care teams to provide comfort and support for those in need in the community.

Within the following document you will find an individual section dedicated to each of the three parishes, a deanery profile and full financial accounts for each of the three parishes.

## Services

(TB: St Mary's Theydon Bois, TG: All Saints Theydon Garnon,  
TM: St Michael's Theydon Mount, ST: St Mary's Stapleford Tawney)

	Week 1	Week 2	Week 3	Week 4	Week 5
8.00am TB	HC (BCP)	HC (BCP)	HC (BCP)	HC (BCP)	HC (BCP)
8.00am TG	HC (BCP)				
9.15am TG	All Age Worship	Parish Communion (CW)	Parish Communion (CW)	Parish Communion (CW)	10.00am
10.30am TB	All Age Worship	Family Communion (CW)	Family Communion (CW)	Morning Worship (CW)	United Benefice Communion (CW)
10.45am TM or ST	Holy Communion (CW) at ST	Service of the Word (CW) at TM	Holy Communion (CW) at ST	Holy Communion (CW) at TM	Rotating around Churches
6.00pm TB	Sung Communion (CW)	Sung Evensong (BCP)	Sung Evensong or Compline (BCP/CW)	Sung Evensong (BCP)	
6.00pm TG					Sung Evensong (BCP)

### Current Regular weekday Services

Holy Communion on Tuesdays at 10.00am (TG); Morning Prayer on Wednesdays at 10.00am (TB) (Week 2: M U Communion) and on Zoom; Holy Communion on Thursdays at 12.00 noon (TB).

# St Mary's Church, Theydon Bois

## Introduction

St Mary's is a flourishing church family. We hold a variety of services that meet a wide spectrum of needs and are able to call on many different talents, both spiritual and practical, amongst the worshippers. We enjoy lovely church buildings and grounds as well as a nearby church hall, which together provide ample space for every kind of church activity.

We are exploring a youth group which we are keen to develop. This goes hand in



hand with a drive to hold on to members of our Junior Church as they approach their mid-teens. We would like to continue to encourage more worshippers to offer their gifts and talents for the work of St Mary's, however large or small, spiritual or practical. At the same time we want to grow together in our love of God and our experience of Him so that we are better able to share our faith with others in the community. To this end we want to encourage more people to attend study groups and to participate in other devotional and learning opportunities.

We look forward to welcoming a new priest to work with our church within the community to encourage spiritual growth for the benefit of all.

The purpose of this profile is to provide an open and honest insight into our church life, both inside St Mary's and within the village, and to share our plans and hopes for the future. In this way we hope to attract a candidate who feels called to meet these challenges with us, and who would be willing and able to channel our energies and work with us to grow the Church within the community.

## **Church Membership**

Number on electoral roll: 152. with the aver-

age attendance at services being:

- Sunday 8.00am - 20,
- Sunday 10.30am - 50, plus 10 children,
- Sunday 6.00pm - 15,
- Wednesday 10.00am - 20 including Zoom
- Thursday 12 noon - 15.

In 2024 there were:

- 19 baptisms,
- 2 confirmed,
- 5 weddings,
- 6 funerals.

There is a Junior Church attended by children between the ages of three and eleven led by members of the congregation. At the other end of the age range, there are a number of retired people, many of whom have worshipped at St Mary's for a large part of their lives and continue to be actively involved. The only clear age gap is the range from the mid-teens to the twenties. This is a time when young people are preparing for and then undergoing higher education, often elsewhere, and typically do not return to the village, in part due to high property prices.

There are many families but also single people. In terms of gender there is a good mix within the congregation. St Mary's is a communal congregation, most people either living in the village or very close by.

Our local secondary school, Davenant Foundation School, is oversubscribed. A main criterion for admission is attendance at a church for five years which draws people to our church. This provides an opportunity to reach out to young families.

## Lay Participation

We have at St Mary's Church:

- 1 Licensed Lay Minister
- 2 Authorised Local Preachers
- 12 Eucharistic Assistants
- 2 Churchwardens
- 2 Deputy Churchwardens
- 1 Verger
- 6 Sidespeople
- 6 who lead intercessions

The PCC meets a minimum of four times a year.

There is a branch of the Mothers' Union attached to St Mary's Church which is involved in many activities from spiritual to practical including leading intercessions. An afternoon meeting with various speakers is held each month and on the second Wednesday of the month members are invited to the 10am Holy Communion Service.

There is a weekly Pram Group in the church hall.

There are full and thriving units for Rainbows, Brownies and Guides in Theydon Bois. The units are not sponsored but closely linked to the Church and some of the leaders are members of the congregation. The guiding groups are encouraged to attend Church Parade on Harvest Sunday and for the Mothering Sunday services. The guiding and local scouting groups parade at the St George's Day and Remembrance Sunday services held at St Mary's.

## Teaching

### *Groups for children and young people*

The Junior Church meets in the Parish Centre during the 10.30am Sunday services during term time with parents leading and



helping on a rota basis. Ages range from pre-school to eleven. All leaders are safer recruited in accordance with Diocesan policy.

### *Adult Groups*

During Lent a Benefice study group takes place. There are two flourishing house groups. This is considered an important area for development. Additionally members of St

Mary's are attending the Course in Christian Studies.

## Music in Worship

The robed choir sings at most 10.30am and 6pm services, as well as other special services such as festivals and weddings. It helps to support the worship by providing a strong lead for the congregational hymns, communion music, canticles and psalms. It also regularly sings anthems selected for the theme of the service or season.



The choir, which is affiliated to the Royal School of Church Music, is four part (SATB). Practices are held on Thursday evenings. The children in the choir rehearse on a Monday afternoon and before the 10.30am Communion services at which they sing. The church does not have a permanent organist, but is ably supported by a rota of regular organists.

The Worship Group consists of a small group of musicians who play guitars, keyboard and sing to lead the worship at the monthly All Age Worship Service.

## Building

The original parish church, dating back to the 13th century, was on the Abridge Road next to Theydon Hall. The present building was consecrated in 1851, the architect being Sidney Smirke, perhaps best known for his design of the Reading Room at the British Museum. Among the hatchments in the main body of the church there is one bearing the arms of King James I, one of only four in the country. The three bells, along with several memorials, were transferred from the 13th century church.

The ground on which the church stands

is clay. Historically movement over the years caused substantial subsidence and cracking, especially in the north and west walls. These have now been totally underpinned, along with the chancel arch, and the nave roof has been anchored with metal ties.

In 2003 the Parish Centre was opened with three multi-purpose rooms and a dedi-



cated clergy vestry. This has provided excellent accommodation for the clergy and the choir and ensures that the Junior Church can function as an integral part of the 10.30am Sunday services. The kitchen facility enables us to provide much appreciated refreshments after services. The centre is used for various meetings and seminars both by St Mary's and also by visiting clergy teams and church groups.

Thanks to the generosity of several benefactors much work has been possible to the fabric of the church. The copper cladding of the spire has been replaced and the main roof re-tiled over its full length, together with new coping stones at the East and West ends of the church.



## Churchyard

During the course of most years there are burials in the churchyard and cremated ashes burials in the Garden of Remembrance.

We have one of the finest churchyards in Essex and of special note are several superb oak trees of considerable age. The Parish Council makes an annual grant towards its maintenance, including care of the War Memorial.

The Churchyard Working Party keeps the main area in good condition, including the memorial garden, leaving the older section as a conservation area, to protect notable wild flowers. We have won awards for the best kept churchyard.

## Church Hall

The separate church hall is situated in Coppice Row, about 200 metres from the church buildings, and was constructed in 1946 out of two RAF Nissen huts.

The hall is financially self-sufficient and a valued community resource used for a diverse range of activities, including the weekly Rainbows, Brownies and Guides meetings, the Community Cuppa and Repair Café, as



well as being hired out for art, dance and fitness classes and for parties and celebrations.

We also host Church events in this hall, including soup lunches, plant sales, church fairs and the weekly pram group for pre-school children and their carers.

## Links with other Churches and the Community

Annual services such as Remembrance Sunday and Nine Lessons and Carols are well attended. The church is packed for the two Christingle services on Christmas Eve.

A number of joint services, such as Communion on Maundy Thursday, are held during the year with the other churches in the Benefice, as well as with the local Baptist Church.

Ongoing witness to the residents of Theydon Bois is mainly handled through pages in the quarterly local Village News magazine.

## Mission

As a church we aim to show the love of God revealed through Christ to the village, the country and the wider world through fund raising for world mission and participation in mission-focused activities locally.

Our active Mission Committee endeavours to raise awareness of world mission among church members and those in the wider community. Soup lunches are held during Lent, Harvest and November, raising funds for the mission charities we support, and enabling us to reach out into the village community. At each lunch a brief talk is given about the charity supported that week and a prayer is said. Our annual *Bags for Life* initiative provides bags to the congregation to fill with goods for The Manna Centre for the homeless in London Bridge, the Mission to Seafarers and Teams4U. We support organisations and people that show God's love in practical ways, as well as those whose aim is to spread the Christian message.

St Mary's is an enthusiastic supporter of Christian Aid Week, working together with the Baptist Church and families from the Catholic Church who are resident in the village. In 2023 £1,788 was collected. Our packed Christingle Services are an opportunity both to welcome many local families to church and to raise funds for The Children's Society.

The total given to missions and charities in 2024 was £5,434.

## Events

We have an active events committee which meets three times a year to organise various social activities. The aim of these is to provide opportunities for fun and fellowship amongst the family of St. Mary's, to embrace the wider community and also to raise much needed funds.



We aim to have six events spread over the year and in recent years these have included flower festivals; May, Autumn and Christmas fairs, safari suppers, plant sales and quizzes.

## Finance

Our relationship with the Diocese of Chelmsford is strong financially and we meet the parish share in full.

The last approved accounts from 2023 show total revenue of £121,000, of which £98,000 was from planned giving, donations and tax rebates, £12,500 from legacies, £4,500 from PCC fees, £2,300 raised through organised events and £3,700 other income.

Expenditure totalled £102,500, of which £64,520 was paid to Diocese of Chelmsford.

## Theydon Bois - wider community

Since the railway came to Theydon Bois in 1865 there has been a steady increase in the size and population of the village and many residents travel to work in London. The original railway became part of the underground network's Central Line in 1949 which made London even more easily accessible.

In spite of this, the parish retains a number of rural features being surrounded by green belt land and Epping Forest. The village green is an attractive centre and there are a range of shops and a primary school. To preserve the character of the village the Theydon Bois & District Rural Preservation Society was founded in 1943 - (for more on the Society see: <https://tbruralpres.org.uk/>).

The local community raised funds for, and maintains, a playground. A Montessori

Nursery is held in the village hall and the Theydon pre-school meets in the Scout Hall. The church hosts a special children's service at Christmas specifically designed for this



age group. The popular local primary school is very much part of the village. The majority of the children who attend Junior Church also attend Theydon Primary. The vicar is also involved here, taking assemblies and attending events and there will be opportunities for the new incumbent to share in this Ministry.

In addition several parishioners are involved with the primary school as governors, members of the PTA and volunteers. Many of the children from St Mary's and the primary school go on to Davenant Foundation School, the local secondary.

The village is very keen to keep its local shops open. There is a Tesco Express



which houses the Post Office, two highly regarded butchers, a popular baker, hairdressers, a newsagent, pharmacy, two estate agents and several other shops. Additionally there are two pubs in the village serving food as well as Italian, Turkish, seafood and two Indian restaurants, a bagel café and a fish and chips takeaway..

The village has an active Parish Council with eleven councillors. The council runs many activities including a village Christmas market. It also assists financially with the maintenance of the churchyard. The village also has an excellent village hall, run by the Village Association. More details of the village can be found at:

<https://theydonbois-pc.gov.uk/>

London is easily accessible by frequent Central Line tube trains.



# All Saints' Church, Theydon Garnon

## Introduction

All Saints' Theydon Garnon is known to millions as it stands overlooking the junction of the M11 and M25. The church has been near to the main route to London for centuries as the old Roman road passes within a few hundred yards to the east of the building and the medieval road to London passes to the west.

## The History of the Parish

The Parish church of All Saints' Theydon Garnon dates back over 800 years. Throughout the whole of this time the building has been used as a place of worship as it is today. It was originally one of the two main Parishes of Epping with Epping Upland north of the High Street in Epping and Theydon Garnon being south of the High Street. In 1890 the Parish of St John the Baptist, Epping was created which incorporated part of the ancient Parish of Theydon Garnon.

The present Theydon Garnon Parish comprises an area south of the Central Line in Epping together with a scattered rural community. The Parish has been through a number of changes through the past 40 years and has responded positively each time. From 1994 to 2011 it was a member of the Epping District Team Ministry, and then in 2011 a United Benefice was formed with Theydon Bois, prior to the formation of the current Benefice.

## Our Parish

In a parish intersected by the M25 and the M11, our church provides an oasis of calm, set as it is, in its rural setting. Key facts within our Parish are (figures from the 2001 census):

- The rural part of the parish consists of 48 households (130 people)
- Average of 2 cars per household in the rural part.
- There is no public transport in the rural part of the Parish.
- The bulk of the population however, lives in the southern part of Epping.

- It is estimated that there are in excess of 2,500 people living in this part of the Parish.
- There are no significant poverty or diversity issues.

There is a private school in the Parish known as Coopersale Hall School. There are two golf courses, a conference and wedding centre and country pubs all within the Parish.

The current electoral roll of the church's Parish has 51 members of which 17 (approximately 31%) live in the Parish and 38 live out of the Parish. When comparing the electoral roll to the Parish, the potential to increase our congregation is clear.

Though the electoral roll is small we try to reach out to every household within the Parish through the free distribution of our occasional Parish leaflets, especially when there are special events.

## The Church Building

The Church building is beautiful. It is an ancient building and is one of only three churches in Essex to have wooden columns. Built around 700 years ago, its history and bonds with the community were created long ago. Every corner of the church is steeped in history, its architecture telling the stories of its past. In summer 2024 the roof of the nave and chancel was completely replaced to future proof the building for years to come. But



this is also a church for today, its stillness providing a tranquil place of worship in today's hectic world.

There is a church hall, known as the Gatehouse which was completed in the year 2000 and won an award for its design.



This generates some income from lettings, including the local elections and a weekly art group, and is used after church services for refreshments.

It is also used for other church activities including the children's church and Brownie sleep-overs.

## The Churchyard

The churchyard extends to about 4½ acres and is kept neat and tidy by the efforts of a small group of parishioners. It is a tranquil place where people often come to sit and think, away from the bustle of life. The grounds provide a wonderful setting to the ancient church. The leader of the Churchyard Working Group is also the dedicated Tree Officer and available to provide advice to other Parishes.

We have a reputation as a "special place to visit". Thousands of people have visited us, particularly for our Hog Roasts and many walkers and visitors pass through our well maintained churchyard.



In June 2009 the PCC agreed to register the Church with 'Small Pilgrim Places' hoping that this will attract new visitors. The north porch has been converted into a wayside chapel as the

porch faces the area used for current burials and provides a small chapel for people tending graves and visiting the churchyard.

## Church Services

The congregation is of traditional central churchmanship using a blend of Common Worship and occasional Book of Common Prayer. Our style of worship is a key attraction for many in the congregation and one of the reasons why so many on our electoral roll come from outside our Parish. The Book of Common Prayer is used for the monthly 8 o'clock Communion and Evensong services and Matins when the Vicar is on holiday. Hymns Old and New are used with organ accompaniment to the hymns and Traditional Anglican is the style used for the monthly Sung Evensong.

Special services throughout the year can see the church bursting at the seams. There is a local Brownie group. Their attendance at the 2-3 church parade services during the year swell the congregation. We hold special services for harvest, Christingle, Carols by Candlelight, Mothering Sunday and Remembrance Sunday.

All these are very popular services which entice our less regular visitors. For example, our Harvest service attracted 53 adults and 13 children and a similar number attended our Remembrance Day Service. There were 61 people at the Easter Service and over



100 attended our Christmas Carol Service. Aside from these special services, the average attendance is approximately 35, but there is considerable potential to increase that number through mission. We welcome around ten wedding couples a year who attend regularly to make their qualifying connection. We have the opportunity, and are constantly looking at

ways to grow our congregation by encouraging our irregular visitors to join us more frequently by using the touch points that we have in people's lives.

In 2023 there were 2 baptisms, 1 Confirmation, 6 weddings and 5 funerals, providing both a service to our Parishioners and an opportunity for outreach. Wedding and Confirmation preparation and Lent groups have been organised on a Benefice basis. Theydon Garnon has also been used as a venue for church Quiet Days.

Although small, our congregation is participative in the life of the church. Aside from the contributions mentioned below, members of the congregation support the services through leading the intercessions, reading the bible and by providing lay assistance at the Communion (and for home Communion). We have a particularly successful lay led family service once a month.

As a Parish we have been successful in nurturing leaders of worship. For example, we have had people trained for leading services and two previous readers are now ordained and have their own parishes. Our recently appointed authorised local preacher leads our monthly lay lead service with support from other congregation members.



We have a dedicated choir, our own bell ringers, a social committee, churchyard working group and fabric working.

We are a committed, participative congregation with a desire to share this beautiful church with others. We love each other dearly and we would like new members to join our fellowship. We know with God's help we have the potential to achieve that. We are particularly welcoming to our wedding couples who we hope will renew their long term com-

mitment to faith during their qualifying period and following their wedding ceremony.

## Children's Group

Our Children's Group meets twice a month and is a small group spanning an age range of 3 to 14 years old. Although the group is small and diverse in age, they learn well together as a group under the guidance of our Junior Church Leader, assisted by her helpers. They occasionally lead the prayers or lead part of the family service. They prepare a Christmas Tree or Crib Scene for St. John's Christmas Tree Festival each year and an Easter Garden.



## Work with other Parishes

The Parish was part of the Epping District Team from 1994 until the creation of the United benefice in 2011 and has therefore worked closely with the Parishes of Epping Upland, Coopersale and Epping. With the creation of the United Benefice stronger ties have formed with Theydon Bois, and one of the key benefits has been the return of a regular incumbent for the parish. New bonds are also now developing with Stapleford Tawney and Theydon Mount following their joining the Benefice.

We are committed to paying all clergy expenses in full in a shared formula with the other parishes, and to offer appropriate ministry assistance where required.

## Finance

The Parish has continued to meet its contribution towards the Diocesan Budget. We rely, however, on the Hog Roast and other fund raising events to top up the accounts as the regular giving is insufficient for the total expenditure each year. We recognise that this is an area that needs to be addressed. During 2023/24 we have raised £200,000 to fund the reroofing of the church building.

## Development

The Church has in recent history completed the building of a new gatehouse, installed new central heating, upgraded the sound system, funded floodlighting for the outside of the church, restored the William Eyre Archer memorial and refurbished the interior of the Church for the eradication of dry rot.

In 2008 we totally refurbished the bells and belfry, and on All Saints' Day 2009 the bells were dedicated. The bells are rung for weddings and funerals, and ringing practice is held every Wednesday.



## Our Charitable Giving

On the charitable side, the Parish has links with the Children's Society, Friends of Essex Churches, The Manna Society, CMS, toys for the Harlow Social Services Department and Christian Aid (the annual amount collected for the latter has now reached £1000 during the last two years).



# St Michael's, Theydon Mount with St Mary's, Stapleford Tawney

## St Michael's, Theydon Mount



The present building dates from 1614; there was a much older church on the site dating from the 13th century, which burnt down, probably struck by lightning. It adjoins Hill Hall, and has always had a close connection with it. Its construction was mostly paid for by Sir William Smith, nephew of Sir Thomas Smith, Chancellor to Elizabeth I. There are a number of fine tombs, monuments and hatchments to the Smyth family in the building which, along with its many original 17<sup>th</sup> century features, led to its Grade I listing. The church seats about 80 and has modern electric heating.

## St Mary's, Stapleford Tawney



St. Mary's probably dates from the 13<sup>th</sup> century, with important restoration work having been carried out in 1862. There is seating for about 100 people plus choir stalls. The church has an integral parish room with kitchen and toilet facilities, added in 1999. Big enough for up to 30 people, it is ideal for meetings, Lent groups and Parish Lunches, as well as post-service refreshments. It enables us to hold fund-raising talks and musical events more comfortably. The splendid 1873 Willis organ is played at organ recitals as well as for worship.

---

## The Services

Since as far back as 1755 St Michael's and St Mary's have shared the same rector, but operating as separate churches. The two parishes merged in 1988 forming a joint PCC and electoral roll, and since mid-2014 the same congregation worships alternate weeks at the two churches. There is a regular robed choir, a much-cherished aspect of worship at both churches. We hold as many special all-inclusive services as we can think of, to encourage wider attendance. These include outdoor Lambing and Pets services in spring and summer, a farmer-supported Harvest Festival, a Christingle service at Candlemas, and a Toy service in early December, as well as the usual major festivals. The Remembrance service at Mount and the symbol-based Good Friday service at Tawney are both especially moving.

One of our congregation is a licensed lay minister, and other LLMs from the benefice and beyond offer a welcome support to the vicar. There is active involvement in the Deanery Synod.

## The People

There are 39 people on the electoral roll. Only ten of these are actually resident in Tawney or Mount, out of a total population of about 270. The rest have been drawn to the churches for other reasons. Like many rural parishes with scattered populations and no school, we would like to attract more children and young people.

Although we are in a country location, many of our congregation are from more urban professional backgrounds, and between them have a wide range of skills and knowledge. Our congregations are mostly comfortable with a middle-of-the-road style

of worship, but we are flexible and willing to try new approaches. We are good at working as a team, and can be actively self-sufficient, with a can-do attitude to ideas and events.

We are fortunate to have wider involvement in the church than just the congregation. A useful neighbourhood WhatsApp group has led to churchyard working parties by local residents, as well as increasing awareness of church events and activities. Tawney church is always open (unmanned) throughout the day, and is a popular stopping-point for walkers, cyclists and general visitors. Because of its isolated location, Mount church has to be kept locked, but is regularly visited by historical and architectural groups, including those on English Heritage tours of Hill Hall. As a small congregation, it is easy to spot and welcome newcomers, and get to know them better during refreshments after services.

## Pastoral Care

As a close-knit congregation, we are all aware and actively involved in offering support to those who need it. The reserved sacrament is taken to the sick and housebound.

## Events and Fund-raising

Regular events are held for both fund-raising and social purposes, and to raise the church profile locally.

## Financial

The parish has a core of committed givers including a significant number who give on a regular basis either by standing order or through the envelope scheme. Tax is reclaimed from Gift-aid wherever possible.

The parish share is obviously a large item to be met annually. It is our pledge to

honour the payment of our share in this and subsequent years as far as possible.

We have found that whenever we've had a major project (eg re-roofing, refurbishing hatchments) the congregation and local residents have been very generous in their support.

## Charitable Giving

We recognise that this is an important part of our Christian calling and our church is pledged to try to support local and national charities.

We support the Manna Centre (food and clothing), Harlow Social Services (toys), Little Haven Children's Hospice (Christmas cards) and the Children's Society (cash donations from Christingle).

## Maintenance

With two listed churches in one small parish, this is an ongoing challenge. The east and west windows at Mount were restored in 2007 and 2010. The roof of Tawney church was re-tiled in 2012 and 2014, and the hatchments at Mount were refurbished in 2020 and 2021. Routine maintenance and repairs are carried out as needed.

The two churchyards are mown by a supportive local contractor, and extra work is done by our neighbourhood group.

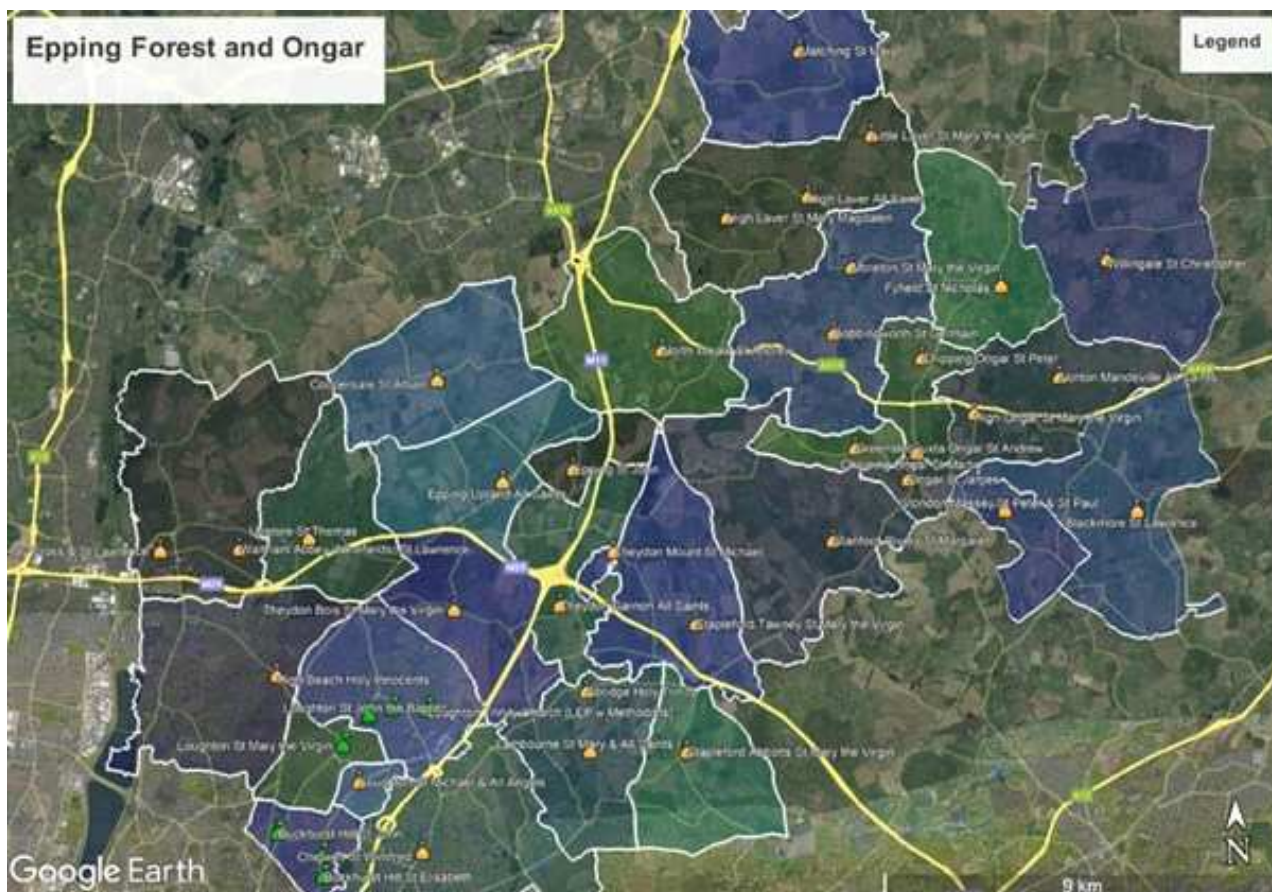
## The Future

The unification of our parish with Theydon Bois and Theydon Garnon is relatively new and is still evolving, but has made good progress under the guidance of our previous vicar. We hope to develop even closer ties with our sister churches.



## The Deanery of Epping Forest and Ongar

The majority of the Deanery is located within the area covered by Epping Forest District Council and the parishes within the Deanery reflect the diversity of the local area, some being deeply rural others far more urban. The parishes of The Theydon Parishes can be found surrounding the junction of the M25 and M11.



The Deanery is organised into three Mission and Ministry Units, each discerning together their own strategic direction for mission. The Theydon Parishes are part of the Epping Forest North Unit, which also includes the parish of St John's Loughton and the parishes that make up the Epping District and Waltham Abbey Team Ministries. The clergy of the unit meet weekly to say Morning Prayer together and enjoy fellowship and friendship with one another in each of the ministry contexts of the Unit.

There are currently 22 clergy serving the Deanery in a range of posts, including stipendiary clergy, house for duty posts and self-supporting ministers alongside a number of lay ministers and authorised local preachers. The post of Associate Priest (House for Duty) in the Theydon Parishes has been vacant since March 2024. At this stage it is expected that an appointment process for that post would take place after the arrival of a new Incumbent and a like for like appointment be made. The new Vicar will be expected to lead any future recruitment process for this post, with support from the Area Dean and Archdeacon of Chelmsford's office.



Deanery synod meets two or three times a year in the evening, and the Chapter meeting bimonthly over lunchtime, varying the day of the week to maximise the opportunity for colleagues to attend, the venues for both meetings rotating around the Deanery with worship in the tradition of the hosting church.

The Deanery looks forward to welcoming and serving with the new Vicar of The Theydon Parishes.

Rev John Fry - Area Dean of Epping Forest and Ongar

## The Vicarage, 2 Piercing Hill, Theydon Bois, Epping, Essex CM16 7JN



The Vicarage is situated in a desirable residential part of Theydon Bois near to Epping Forest, while both St Mary's Church and the Church Hall are in very close proximity. The thriving centre of Theydon

Bois is less than half a mile or ten-minute walk away and has a good array of shops, restaurants and pubs, as well as the Central line underground station with easy access to central London.

The property is a large, fully gas centrally heated four-bedroom detached house with an integral garage and sizeable gardens to both the front and rear.

The ground floor has a large lounge with a working fireplace and patio doors leading to a paved terrace and the rear garden, which is laid to lawn with mature trees and shrubs. There is also a separate large dining room, large fitted kitchen, utility room, office, toilet and wood storage shed.

The carpeted stairs and landing lead to four well proportioned, carpeted bedrooms on the first floor, three of which have built-in wardrobes and two with wash-hand basins. There is also a family bathroom and a separate toilet.



The property has a full alarm system fitted. It should be noted that the décor is due for refurbishment and account will be taken of the successful candidate's wishes.

## Room Dimensions and Layout

### *Ground Floor*

**Lounge:** 6.30m x 3.60m - fireplace and patio doors to garden.

**Dining Room:** 3.70m x 3.60m - serving hatch from kitchen.

**Fitted Kitchen:** 4.20 x 3.60m - electric oven and hob, fridge and dishwasher.



**Utility Room:** 3.00m x 1.70m - built-in cupboards and sink, adjacent wood storage shed and door to rear garden.

**Office:** 4.85m x 3.00m - also sufficient space for a waiting area in adjacent lobby.

When the vicar receives visitors, the lobby area upon entering the house together

with the office and toilet can be segregated from the rest of the house using an internal door.

On the other side of the internal door, there is a large hallway with storage cupboard and staircase to the first floor.

The integral garage is accessible from indoors via the utility room.

### *First Floor*

**Bedroom 1:** 4.00m x 3.40m - built-in wardrobe.

**Bedroom 2:** 4.10m x 2.80m - built-in wardrobe and wash-hand basin.

**Bedroom 3:** 3.70m x 3.40m - wash-hand basin.

**Bedroom 4:** 3.40m x 2.60m - built-in wardrobe.

**Family bathroom,** separate toilet, airing cupboard and spacious landing area.



**ST MARY'S CHURCH, THEYDON BOIS**  
**FINANCIAL STATEMENTS FOR THE YEAR ENDED 31 DECEMBER 2023**

		2023			
<b>RECEIPTS AND PAYMENTS ACCOUNT</b>	Note	General fund	Designated funds	Restricted funds	Total funds
<b>RECEIPTS</b>					
Planned Giving and Envelopes		67,140	-	-	67,140
Collections and Donations		16,754	-	-	16,754
Legacies		12,500	-	-	12,500
Tax Rebate		13,670	-	-	13,670
Church Hall		-	17,786	-	17,786
PCC Fees		4,451	-	-	4,451
Churchyard		-	754	-	754
Events income	4	2,353	-	-	2,353
Rent		820	-	-	820
Interest		3,008	-	-	3,008
Church Maintenance Reserve		-	-	2,750	2,750
		<b>120,697</b>	<b>18,540</b>	<b>2,750</b>	<b>141,986</b>
<b>PAYMENTS</b>					
Family Purse		64,520	-	-	64,520
Church Hall		-	13,327	-	13,327
Parish Giving	5	6,474	-	-	6,474
Insurance and utilities		5,310	-	-	5,310
Music and Organ		6,003	-	-	6,003
AV Fund		-	-	348	348
Church Maintenance Reserve		-	-	5,660	5,660
Assigned Fees		2,593	-	-	2,593
Church Office		12,081	-	-	12,081
Clergy Expenses		1,838	-	-	1,838
Flower Expenditure		439	-	-	439
Churchyard		0	1,220	-	1,220
Junior Church		3,285	-	-	3,285
		<b>102,542</b>	<b>14,547</b>	<b>6,008</b>	<b>123,097</b>
<b>Net receipts/ (payments)</b>		18,154	3,993	(3,258)	18,889
Cash balance b'f		68,295	25,860	25,069	119,224
<b>Cash balance c'f</b>		<b>86,449</b>	<b>29,853</b>	<b>21,811</b>	<b>138,113</b>

		2022			
<b>RECEIPTS</b>		General fund	Designated funds	Restricted funds	Total funds
		£	£	£	£
Planned Giving and Envelopes		55,850	-	-	55,850
Collections and Donations		23,096	-	-	23,096
Legacies		37,138	-	-	37,138
Tax Rebate		11,041	-	-	11,041
Church Repairs		-	-	667	667
Church Hall		-	15,830	-	15,830
Churchyard		-	774	-	774
PCC Fees		4,455	-	-	4,455
Events income	4	2,416	-	-	2,416
Rent		1,125	-	-	1,125
Interest		680	-	-	680
		<b>135,801</b>	<b>16,604</b>	<b>667</b>	<b>153,073</b>
<b>PAYMENTS</b>					
Family Purse		79,098	-	-	79,098
Church Hall		-	24,200	-	24,200
Parish Giving	5	5,366	-	-	5,366
Insurance and utilities		4,801	-	-	4,801
Music and Organ		9,893	-	-	9,893
Assigned Fees		1,607	-	-	1,607
Church Office		7,830	-	-	7,830
Clergy Expenses		2,569	-	-	2,569
Flower Expenditure		599	-	-	599
Churchyard		-	1,265	-	1,265
Junior Church		7,135	-	-	7,135
		<b>118,897</b>	<b>25,465</b>	<b>-</b>	<b>144,362</b>
<b>Net receipts/ (payments)</b>		16,905	(8,861)	667	8,712
Cash balance b'f		51,390	34,721	24,401	110,512
<b>Cash balance c'f</b>		<b>68,295</b>	<b>25,860</b>	<b>25,069</b>	<b>119,224</b>

**ST MARY'S CHURCH, THEYDON BOIS**  
**FINANCIAL STATEMENTS FOR THE YEAR ENDED 31 DECEMBER 2023**

		At 31 December 2023			
		General fund	Designated funds	Restricted funds	Total funds
		£	£	£	£
<b>STATEMENT OF ASSETS AND LIABILITIES</b>					
<b>ASSETS</b>					
		86,449	29,853	21,811	138,113
		13	46	-	59
		<b>86,462</b>	<b>29,899</b>	<b>21,811</b>	<b>138,172</b>
		-	-	-	-
		-	-	-	-
		<b>86,462</b>	<b>29,899</b>	<b>21,811</b>	<b>138,172</b>
	Assets retained for the Church's use - 6/7				
	Church contents	140,000	-	-	140,000
	Church Hall	-	729,250	-	729,250
	Church Hall contents	-	30,386	-	30,386
	<b>Fixed assets</b>	<b>115,000</b>	<b>759,636</b>	<b>-</b>	<b>899,636</b>
	<b>TOTAL ASSETS</b>	<b>201,462</b>	<b>789,535</b>	<b>21,811</b>	<b>1,037,808</b>
<b>LIABILITIES</b>					
-					
<b>NET ASSETS</b>					
		<b>201,462</b>	<b>789,535</b>	<b>21,811</b>	<b>1,037,808</b>

		At 31 December 2022			
		General fund	Designated funds	Restricted funds	Total funds
		£	£	£	£
<b>ASSETS</b>					
		68,295	25,860	25,069	119,224
		13	46	-	59
		<b>68,308</b>	<b>25,906</b>	<b>25,069</b>	<b>119,283</b>
		-	-	-	-
		-	-	-	-
		<b>68,308</b>	<b>25,906</b>	<b>25,069</b>	<b>119,283</b>
	Assets retained for the Church's use - 6/7				
	Church contents	115,000	-	-	115,000
	Church Hall	-	620,000	-	620,000
	Church Hall contents	-	25,000	-	25,000
	<b>Fixed assets</b>	<b>115,000</b>	<b>645,000</b>	<b>-</b>	<b>760,000</b>
	<b>TOTAL ASSETS</b>	<b>183,308</b>	<b>670,906</b>	<b>25,069</b>	<b>879,283</b>
<b>LIABILITIES</b>					
-					
<b>NET ASSETS</b>					
		<b>183,308</b>	<b>670,906</b>	<b>25,069</b>	<b>879,283</b>

**NOTES TO THE FINANCIAL STATEMENTS**

- Under current legislation the PCC may report on a Receipts and Payments basis with a Statement of Assets and Liabilities and it has elected to do so.
- The financial statements are prepared on an historic cost basis.
- Restricted funds may be expended only on objects specified by the trust, bequest or donation. Unrestricted funds may be used for the PCC's general purposes. The PCC holds no endowment funds.
- Events receipts were as follows -

	2023	2022
	Receipts	Receipts
	£	£
Christmas Fayre	700	592
Plant Sale	-	683
Open Gardens	263	460
Quiz	400	480
Wreath making	-	200
Donkey Derby	612	-
Safari	378	-
	<b>2,353</b>	<b>2,415</b>

**ST MARY'S CHURCH, THEYDON BOIS**  
**FINANCIAL STATEMENTS FOR THE YEAR ENDED 31 DECEMBER 2023**

**NOTES TO THE FINANCIAL STATEMENTS (continued)**

5. Parish giving payments were as follows -

	<b>2023</b>	<b>2022</b>
	<b>Payments</b>	<b>Payments</b>
	£	£
Donations up to and including £250 (a)		
Bible Society	-	150
British Legion	425	333
Christian Aid	250	-
Church Army	393	285
Church Urban	16	-
CMS	220	285
ECO Church	150	-
Embrace ME	432	285
F/IPASC	493	300
Koininia	353	285
Kotroci/LOGOS	353	285
LMDC	-	224
Manna Centre	345	210
Mercy Ships	350	290
Mission for Seafarers	383	450
Shelter	233	103
St Clare's	353	285
Syria-Turkey	270	-
The Childrens Society	375	530
Teams4u	723	287
Ukraine	-	424
Wycliffe Bible Trust	357	355
	<b>6,474</b>	<b>5,366</b>

6. Fixed assets are included in the Statement of Assets and Liabilities at their insured value.  
7. Consecrated and benefice property is excluded from the accounts by virtue of s10(2) of the Charities Act 2011.  
8. No payments were made to Trustees other than to reimburse them for expenses they incurred.  
9. No wages, salaries or remuneration were paid to Trustees or any persons connected to the Trustees in respect of the above.

10. Fund cash balances	<b>2023</b>			
	Balance b'f	Receipts	Payments	Balance c'f
	£	£	£	£
<b>Restricted funds</b>				
Wild Bursary	1,494	-	-	1,494
AV fund	14,711	-	(348)	14,363
Church Maintenance reserve	8,863	2,750	(5,660)	5,953
	<b>25,068</b>	<b>2,750</b>	<b>(6,008)</b>	<b>21,810</b>
<b>Designated unrestricted funds</b>				
Churchyard	2,226	754	(1,221)	1,759
Church Hall	23,635	17,786	(13,327)	28,094
	<b>25,861</b>	<b>18,540</b>	<b>(14,548)</b>	<b>29,853</b>
<b>Unrestricted general fund</b>	<b>68,295</b>	<b>120,697</b>	<b>(102,542)</b>	<b>86,449</b>
	<b>119,224</b>	<b>141,987</b>	<b>(123,098)</b>	<b>138,113</b>

	<b>2022</b>			
	Balance b'f	Receipts	Payments	Balance c'f
	£	£	£	£
<b>Restricted funds</b>				
Wild Bursary	1,494	-	-	1,494
AV fund	14,711	-	-	14,711
Church Maintenance reserve	8,196	667	-	8,863
	<b>24,401</b>	<b>667</b>	<b>-</b>	<b>25,068</b>
<b>Designated unrestricted funds</b>				
Churchyard	2,716	774	(1,265)	2,225
Church Hall	32,005	-	(8,370)	23,635
	<b>34,721</b>	<b>774</b>	<b>(9,635)</b>	<b>25,860</b>
<b>Unrestricted general fund</b>	<b>51,390</b>	<b>135,801</b>	<b>(118,897)</b>	<b>68,294</b>
	<b>110,512</b>	<b>137,243</b>	<b>(128,532)</b>	<b>119,223</b>

**THEYDON GARNON PAROCHIAL CHURCH COUNCIL  
GENERAL (Unrestricted) Receipts & Payments Account**

	<b>2023</b>		<b>2022</b>	
<b>Receipts</b>	<b>£</b>	<b>£</b>	<b>£</b>	<b>£</b>
Voluntary Receipts				
Regular Giving				
Planned Giving	17,624		18,055	
Collections	655		785	
Gift Aid Tax recovered	<u>4,499</u>	22,778	<u>5,519</u>	24,359
Other Voluntary Receipts				
Donations - general	0		0	
Donations - specific	0		0	
Bequests	5,034		0	
Wall Safe	11		4	
VAT refund	0		0	
Grants Received	<u>0</u>	5,045	<u>0</u>	4
Receipts from activities for generating funds				
Coffee Money	495		482	
Book Sales	31		3	
Gatehouse Hire	2,854		2,366	
Marquee Hire	50		0	
Summer Fete / May Fair	0		1,584	
Hog Roast (Net Inc.)	0		742	
Church Flowers	0		0	
Plant Sale	0		0	
Harvest Supper	0		390	
Advent Stall	0		0	
Sundry Sales	<u>0</u>	3,430	<u>0</u>	5,567
Receipts from Church Activities				
Fees	4,233		2,535	
Memorial Book	<u>50</u>	4,283	<u>0</u>	2,535
Receipts from Investments				
Interest/Dividends	<u>108</u>	108	<u>26</u>	26
<b>Total Receipts</b>		<b>35,644</b>		<b>32,491</b>

**GENERAL (Unrestricted) Receipts & Payments Account contd.**

	2023		2022	
Payments	£	£	£	£
Payments re regular giving and Voluntary Receipts				
Collections	0		0	
Donations (Manna)	0		78	
Transfers to Churchyard a/c	0		0	
Transfers to Fabric a/c	<u>1,550</u>	1,550	<u>0</u>	78
Payments re Activities for generating funds				
May Fair	0		35	
Harvest Supper	0		62	
Sundry Other	<u>0</u>	0	<u>0</u>	97
Church Activities				
Parish Share	24,951		30,724	
Clergy expenses	1,275		750	
Church Music costs	1,115		1,295	
Sacristry Supplies	156		316	
Oil, Electricity, Water	2,195		1,798	
Church Insurance	2,229		2,114	
Organ repairs	250		169	
Printing & Copying	104		91	
Internet costs	105		0	
Subscriptions	120		120	
Cleaning and Maintenance	835		415	
Memorial Book	0		0	
Flowers	0		0	
Coffee expenses	<u>0</u>	33,335	<u>0</u>	37,792
United Benefice payments				
UB Administrator	2,231		1,805	
Payroll services/Licences	<u>411</u>	2,642	<u>260</u>	2,065
<b>Total Payments</b>		<b><u>37,527</u></b>		<b><u>40,032</u></b>
Excess/(Deficit) of receipts over payments		<b>-1,883</b>		<b>-7,541</b>
Bank Balance as at 1st January		12,820		20,361
Bank Balance as at 31st December		10,937		12,820
		<b>-1,883</b>		<b>-7,541</b>

The following Fabric Account and Churchyard Account are not formally part of this Annual Report and its examination but are provided for information and completeness.

**THEYDON GARNON CHURCH FABRIC FUND Receipts & Payments  
Receipts & Payments Account - Designated and Unrestricted**

Receipts	2023		2022	
	£	£	£	£
Voluntary Receipts				
Regular Giving				
Planned Giving	100	100	100	100
Other Voluntary Receipts				
Bequests	0		0	
Donations - General	0		320	
Donation of fees	0		645	
Donations - Ringers	5		126	
Donations - Roof Fund	39,445		10,285	
Transfer from General Account	1,550		0	
Gift Aid Tax recovered	2,443		0	
LPOW VAT refund	2,249	45,692	0	11,376
Receipts from Investments				
Interest/Dividends	230	230	9	9
<b>Total Receipts</b>		<b>46,022</b>		<b>11,485</b>

Payments	2023		2022	
	£	£	£	£
Maintenance (General)	0		0	
Maintenance (Roofing)	0		13,575	
Maintenance (New Boiler etc)	0		0	
Organ repairs	0		0	
Flag & flagpole	0		0	
<b>Total Payments</b>		<b>0</b>		<b>13,575</b>

Excess/(Deficit) of receipts over payments 46,022 -2,090

Bank Balance as at 1st January 21,614 23,704

Bank Balance as at 31st December 67,636 21,614

**46,022** **-2,091**

**THEYDON GARNON CHURCH CHURCHYARD FUND**  
**Receipts & Payments Account - Designated and Unrestricted**

Receipts	2023		2022	
	£	£	£	£
Donations - specific	0		0	
Donations - other	0		100	
Parish Council Grant	250		250	
War Graves Commission	12		12	
Fees	308		705	
Proceeds from Sale of Mowers	71		0	
Interest/dividends	22	663	2	1,069
<b>Total Receipts</b>		<b>663</b>		<b>1,069</b>

Payments	2023		2022	
	£	£	£	£
Gatehouse Insurance	791		734	
Gatehouse maintenance	0		1,800	
Tree Surgery	0		0	
Equipment (new/repairs)	0		128	
Petrol & sundries	0	791	384	3,046
<b>Total Payments</b>		<b>791</b>		<b>3,046</b>

Deficit of receipts over payments		<b>-128</b>		<b>-1,977</b>
Bank Balance as at 1st January		3,258		5,235
Bank Balance as at 31st December		3,130		3,258
		<b>-128</b>		<b>-1,977</b>

Parochial Church Council of St Mary's Stapleford Tawney and St Michael's Theydon Mount  
Financial Statement for the year ended 31st December 2023  
Receipts and Payments Account

	Nat West General Account £	Capital Reserve £	St Mary's Fund £	St Michael's Fund £	TOTAL 2023 £	2022 £
<b>Balance Brought Forward 1st January 2023</b>	52,208.74	11,173.43	9,979.38	9,450.28	82,811.83	54,443.40
<b>Receipts</b>						
Green	1,200.00				1,200.00	8,235.00
Yellow	3,138.00				3,138.00	1,482.58
Loose	702.46				702.46	511.92
Donations	978.00				978.00	17,475.89
Events	1,580.60				1,580.60	828.00
Hire	80.00				80.00	350.00
Regular/Transfers	7,106.00				7,106.00	0.00
Weddings	0.00				0.00	512.67
Funerals	3,004.34				3,004.34	2,927.99
Auto Credits for Regular Giving	0.00				0.00	8,477.00
Interest	0.00	433.43	387.11	366.60	1,187.14	199.95
Grounds Maintenance	0.00				0.00	1,200.00
Gift Aid	0.00				0.00	3,550.07
H'STONE FOR MAURICE PADFIELD	35.00				35.00	0.00
ANTHONY SQUIRE MEMORIAL	166.00				166.00	0.00
BERNARD PRIDMORE INTERMENT OF ASHES	182.00				182.00	0.00
FUEL PAYMENT	2,280.00				0.00	0.00
COMPENSATION	100.00				100.00	0.00
LEGACY FROM MAURICE PADFIELD	10,260.60				10,260.60	0.00
Tea Tower Sales	0.00				0.00	5.00
	<u>30,813.00</u>	<u>433.43</u>	<u>387.11</u>	<u>366.60</u>	<u>32,000.14</u>	<u>45,756.07</u>
<b>Payments</b>						
Parish Share	-11,000.00				-11,000.00	-9,000.00
Insurance	-3,164.32				-3,164.32	-3,124.17
CCLI Licence	-223.30				-223.30	-209.89
Priest Expenses	-419.32				-419.32	-378.66
Admin Wages	-737.88				-737.88	-737.88
Electricity - Mount	-237.41				-237.41	-907.51
Electricity - Tawney	-1,588.61				-1,588.61	-313.74
Oil	-1,352.43				-1,352.43	-119.23
Water	-125.36				-125.36	0.00
Grounds Upkeep	-5,565.00				-5,565.00	-720.00
Organist	-660.00				-660.00	-312.00
Septic tank	0.00				0.00	-161.00
Organ tuning	-493.00				-493.00	-89.56
Event Expenses	-79.90				-79.90	-1,002.00
Building Maintenance	-216.00				-216.00	-312.00
Security Services	-324.00				-324.00	
	<u>-26,186.53</u>	<u>0.00</u>	<u>0.00</u>	<u>0.00</u>	<u>-26,186.53</u>	<u>-17,387.64</u>
<b>Net Receipts / Payments for year</b>	<u>4,626.47</u>	<u>433.43</u>	<u>387.11</u>	<u>366.60</u>	<u>5,813.61</u>	<u>28,368.43</u>
<b>Balances Carried Forward 31st December 2023</b>	<u>56,835.21</u>	<u>11,606.86</u>	<u>10,366.49</u>	<u>9,816.88</u>	<u>£ 88,625.44</u>	<u>£ 82,811.83</u>

Note: These financial statements of the PCC have been prepared in accordance with the Church Accounting regulations 2006

Parochial Church Council of St Mary's Stapleford Tawney and St Michael's Theydon Mount  
 Financial Statement for the year ended 31st December 2023  
 Statement of Assets and Liabilities

At 31st December 2023						
ASSETS	General Account	Hatchments Fund	Capital Reserve	St Mary's Fund	St Michael's Fund	Total Funds
	£	£	£	£	£	
Cash at Bank	56,835.21	0.00	11,606.86	10,366.49	9,816.88	88,625.44
Cash in Hand						0.00
Total Cash	56,835.21	0.00	11,606.86	10,366.49	9,816.88	88,625.44
Debtors						0.00
<b>Current Assets</b>	<b>56,835.21</b>	<b>0.00</b>	<b>11,606.86</b>	<b>10,366.49</b>	<b>9,816.88</b>	<b>88,625.44</b>
Assets retained for the Churchs' use						0.00
						0.00
						0.00
<b>Fixed Assets</b>	<b>0.00</b>	<b>0.00</b>	<b>0.00</b>	<b>0.00</b>	<b>0.00</b>	<b>0.00</b>
<b>TOTAL ASSETS</b>	<b>56,835.21</b>	<b>0.00</b>	<b>11,606.86</b>	<b>10,366.49</b>	<b>9,816.88</b>	<b>88,625.44</b>
<b>LIABILITIES</b>						0.00
<b>NET ASSETS</b>	<b>56,835.21</b>	<b>0.00</b>	<b>11,606.86</b>	<b>10,366.49</b>	<b>9,816.88</b>	<b>88,625.44</b>

At 31st December 2022						
ASSETS	General Account	Hatchments Fund	Capital Reserve	St Mary's Fund	St Michael's Fund	Total Funds
	£	£	£	£	£	
Cash at Bank	52,208.74	0.00	11,173.43	9,979.38	9,450.28	82,811.83
Cash in Hand						0.00
Total Cash	52,208.74	0.00	11,173.43	9,979.38	9,450.28	82,811.83
Debtors						0.00
<b>Current Assets</b>	<b>52,208.74</b>	<b>0.00</b>	<b>11,173.43</b>	<b>9,979.38</b>	<b>9,450.28</b>	<b>82,811.83</b>
Assets retained for the Churchs' use						0.00
						0.00
						0.00
<b>Fixed Assets</b>	<b>0.00</b>	<b>0.00</b>	<b>0.00</b>	<b>0.00</b>	<b>0.00</b>	<b>0.00</b>
<b>TOTAL ASSETS</b>	<b>52,208.74</b>	<b>0.00</b>	<b>11,173.43</b>	<b>9,979.38</b>	<b>9,450.28</b>	<b>82,811.83</b>
<b>LIABILITIES</b>						0.00
<b>NET ASSETS</b>	<b>52,208.74</b>	<b>0.00</b>	<b>11,173.43</b>	<b>9,979.38</b>	<b>9,450.28</b>	<b>82,811.83</b>